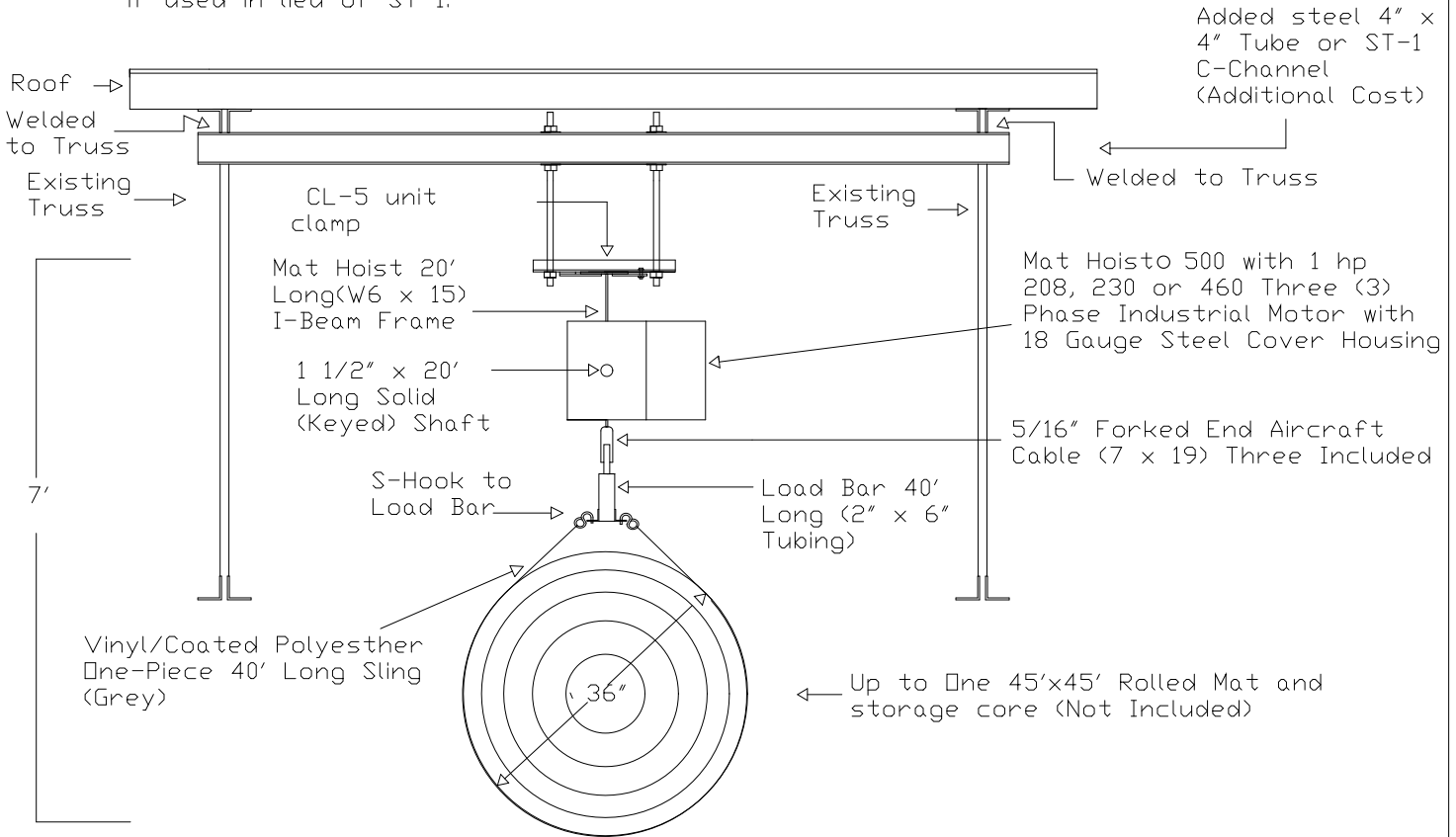


Illustrates: Suspension parallel to truss system with added cross steel welded to top chord of truss. CL-5 unit clamp bolted through center space of ST-1. Tube steel must be drilled on site if used in lieu of ST-1.



Added steel 4" x 4" Tube or ST-1 C-Channel (Additional Cost)

Mat Hoist 500 with 1 hp 208, 230 or 460 Three (3) Phase Industrial Motor with 18 Gauge Steel Cover Housing

5/16" Forked End Aircraft Cable (7 x 19) Three Included

← Up to One 45'x45' Rolled Mat and storage core (Not Included)

Note: Mat Can be One Piece or Multiple Sections

Note: Structural Strength of Truss & Wall NOT Responsibility of Mat Hoist Manufacturer.

<p>NGE Inc. P.O. Box 370/Industrial Park 302 North Erickson Roland, IA 50236</p>	<p>Mat Hoist 500 ST-1 Welded to Top Chord Drawing MH500-10</p>	<p>Phone: (515)-388-4118 Fax: (515) 388-4340 Email: mathoist@mathoist.com Website: www.mathoist.com</p>
--	--	---